

## Fluidmaster Frameless Cistern TegraFlo Top/Front

Wet Wall Installation For Floor Standing WC Pan

### Product Data Sheet

**SKU code:** 2041N-0017-30

**EAN code:** 8681282661442

### Installation method

- Installation into solid walls,
- Pre-wall installation.

### Properties

- Pre-assembled concealed cistern, with top or front actuation,
- Actuation method - mechanical (top/front),
- Installed factory pre-set dual flush valve, large flush 4 L, small flush 2 L,
- Concealed cistern is fully insulated against condensation,
- Water supply connection possibility, on the left side,
- Maintenance service work is possible without using any tools.

### Special feature

- Quiet mechanical fill valve Fluidmaster 747 Series (Noise class 1 ISO 3822),
- Fill valve flow pressure 0,2 - 10 bar,
- Possible to install Frescoblu Hygene+ kit (has to be ordered separately).

### Product contains

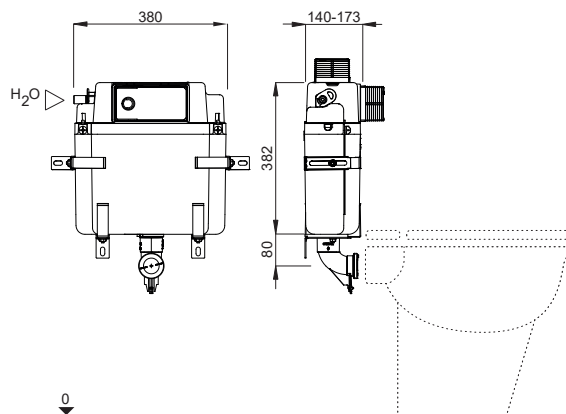
- Concealed cistern is equipped with pre-installed stop valve – on the left side,
- Water supply connection G 1/2 with flexible hose,
- Flush pipe,
- Masonry / plaster net,
- Installation manual,
- Complete installation and fixing material.

### Dimension of the product

- Width 380 mm, height 802 mm, depth 145 mm

### Information

- Quantity – packaging / pallet: 1 / 19 pcs
- Warranty: more information in General terms and conditions



Available flush plates, accessories has to be ordered separately

## FLUSH PLATES

### Elixir



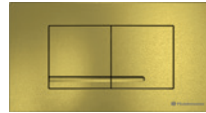
Matt chrome



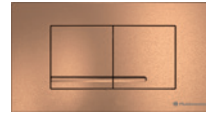
Bright chrome



Matt black



Brushed bronze



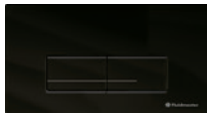
Brushed copper



Brushed black  
titanium



GLASS  
White



GLASS  
Black



STEEL  
Stainless steel

### Tonic IR TECH



White